

Seismic Mass Design and Plate Installation for the ATC at the Aberdeen Proving Grounds

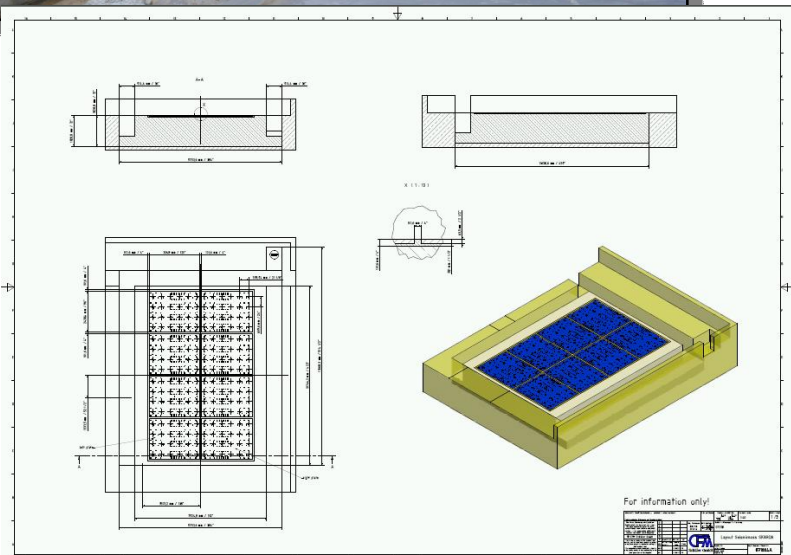
CFM – ITBONA was rewarded a contract to design a seismic mass with anchoring system and base plates for an MTS Light Truck Road Simulator. The following pictures show the installation progress. For further information please contact us @ 952 942-6104 or via e-mail at contact@cfm-itbona.com

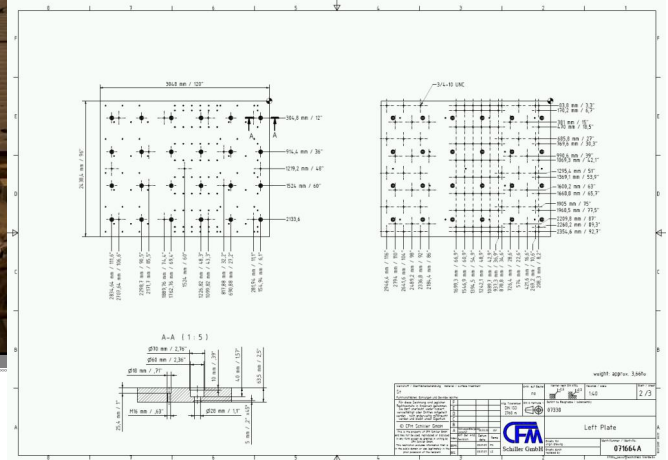


Above:
Seismic mass with anchor frame and 192 anchors M24.

The building is not in place yet.

Right:
Design drawings for the seismic mass with anchor frame. After sign-off of this drawing the Civil Engineering drawings for the seismic mass will be generated.





Setting and Leveling of the 8 steel base plates size 8' x 10' x 2.75" designed and manufactured by CFM-ITBONA LLC

Each plate has a weight of 8100 lbs

Accuracy according DIN 876 / III





After fine leveling all plates are grouted in using a non-shrink grout PAGEL V1/50 from PAGEL-USA (www.pagel-usa.com).

Because of the fast curing time of the grout (7000 PSI in one day!) the anchors can be tightened down already the next day.

The anchors are made of high alloy steel. All anchors receive a pretension of several 100 NM of torque.

